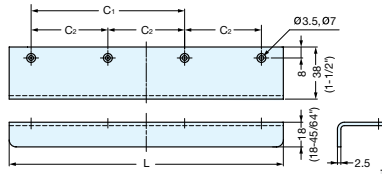


PULL



SN



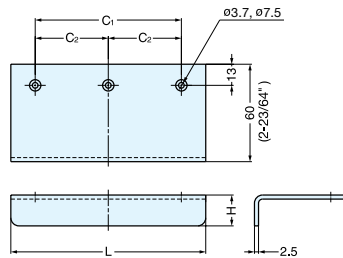
Material	Finish
304 Stainless Steel	Mirror (M) Satin (S)

Item No.	L	C ₁	C ₂	Hole	Weight (g)	Box (pcs)	Carton (pcs)
SN- 50/M	50 (1-31/32")	30 (1-3/16")	-	2	47	40	400
SN- 70/M	70 (2-3/4")	46 (1-13/16")	-		65	30	300
SN- 95/M	95 (3-47/64")	65 (2-9/16")	-		90	20	200
SN-120/M	120 (4-23/32")	90 (3-35/64")	45	3	112	15	150
SN-150/M	150 (5-29/32")	114 (4-31/64")	57		147		
SN-200/M	200 (7-7/8")	112 (4-13/32")	56	4	200	15	60
SN-300/M	300 (11-13/16")	180 (7-3/32")	90		300	10	40

PULL



SND



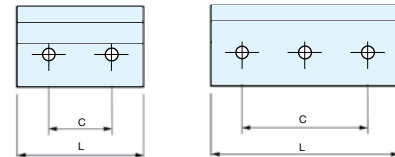
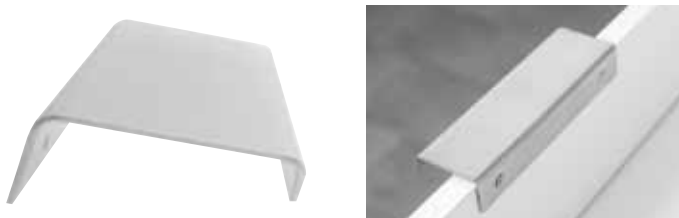
Material	Finish
304 Stainless Steel	Mirror

Item No.	L	C ₁	C ₂	H	Weight (g)	Box (pcs)	Carton (pcs)
SND- 50/M	50 (1-31/32")	30 (1-3/16")	-	17 (43/64")	67	10	200
SND- 70/M	70 (2-3/4")	46 (1-13/16")	-		95		
SND- 95/M	95 (3-47/64")	65 (2-9/16")	-	18 (45/64")	130	5	100
SND-120/M	120 (4-23/32")	90 (3-35/64")	45		166		
SND-150/M	150 (5-29/32")	114 (4-31/64")	57		208		

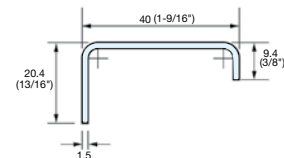
PULL



DSI-350



Item No.	C	L	Weight (g)	Box (pcs)	Carton (pcs)
DSI-350-16	16 (5/8")	32 (1-1/4")	22	25	250
DSI-350-64	64 (2-1/2")	96 (3-25/32")	66		
DSI-350-96	96 (3-25/32")	128 (5-1/16")	88		
DSI-350-128	128 (5-1/16")	160 (6-5/16")	110		
DSI-350-160	160 (6-5/16")	192 (7-9/16")	132	10	100
DSI-350-192	192 (7-9/16")	224 (8-13/16")	154		
DSI-350-224	224 (8-13/16")	256 (10-1/16")	176		
DSI-350-256	256 (10-1/16")	352 (13-7/8")	240		
DSI-350-352	352 (13-7/8")	544 (21-7/16")	374		



Material	Finish
304 Stainless Steel	Satin